

RECORD

SC : Sea of Cortez
En : Ensenada
BC : Baja California

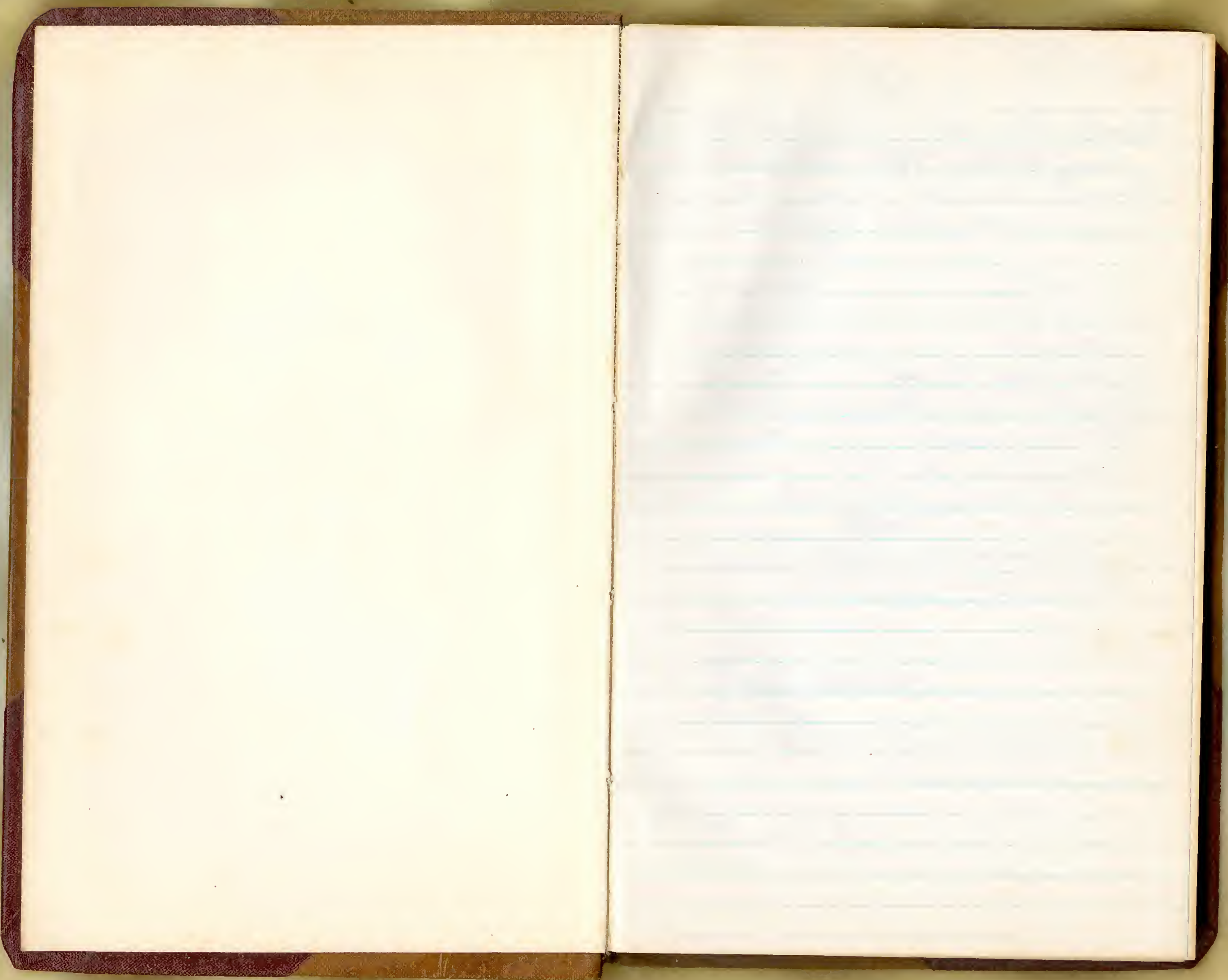
Sterling
Account Book
No. 5981
Rulings Carried in Stock
CASH
RECORD
SINGLE ENTRY LEDGER
DOUBLE ENTRY LEDGER
—
Made in U. S. A.

596

Algoe to get
mosses in high Chaparral with side
brush now
Brown very much.

SC :-
"SEA of PORTER"

LEE O. MILES
COLLECTION



sun 2/17/52

SC 1

Rocky Pt just n. of San Felipe
Cove, below Volcanos Light.

Grass 1 & 2, some upper 3

Herbs


- Cupressus sempervirens
- Jedula (ly. grass)
- Black murex (1)
- Acanthaceae

SC 2 Shrimps, crabs

moon

SC 2 2/18/52

Boulder point, n. of n. cove
of San Felipe, adj to lava flow.
Boulders over 10" 14" granitic,
some lavas. See journal.

- | | |
|--|-----------------|
| Jedula | Alydidae |
| Acanthaceae | Crep. miran |
| Cerithium? | Wing shells |
| Murex | Crep. adamsi |
| Black murex | Amphibia versi. |
| Small " | |
| Clam, white, ☉ | |
| " , bent nose, heavy shell | |
| Polyps,  Polyps? | |
| Borer - (lar) | |

- Crabs, fuzzy
- Ichtyo?
- Porphyra: Acetabularia
- Actinoptera
- Comp. acid? (Drugs, superficial)
- " " - creamy masses
- Chitons, green
- Bryozoa stars

2/19/52 SC 3

Sau Felipe. Same general location as SC 2, but into of 3rd & further N. to large rocks on point

Boulders to 2' x 3' & 10" thick, some huge. Also many 10" - 14" interspersed. Granitic & basaltic (rhyolite, very thin & fine bedded)

Some specimens as SC 2

Fuzzy crab

Porcelain - long

Spiral 3" crab

Red Sea Anemone

Black Sea Cucumbers

Chitons

Algae

Red Sea

Silica

Iron

Coralline

Silica

Iron

At edge of boulder field, 2 long angular shells,

2/20/52 SC 4 (8000 ft. SC 5)

Sau Felipe - Same general location as SC 3, but further S, 2nd point. 2 x 43. Boulder field

Some specimens as SC 3 plus Cornus sp.

Worms in calc. tubes

Sea Anemone, red

SC 5

4/20/52

San Felipe

Found on #1 SC4

- nostrarius parva
- Conus (gastropod) - gastropod-like pelagic?
- Thais (plouderi?)
- Clams
- Panopus (gastropod) S. T. ...
- Alvella pedroana

In Q2, boulder began -
 also occasionally boulders in
 sand of Q3 -

4/21/52

SC 6

San Felipe - Oyster reef Q2-3
 and extensive Clam
 sand bars S. of S. of S. Felipe
 about 1 mile. Road built
 to 11 sand dunes nearest beach.
 3-4 sand bars with
 lagoons between - nearly flat -
 sand clean, some silt in some
 lagoons, others clean.
 not stagnant.

- Sand dollars, keyhole, arrow
- " " " " small green
- " " " " Walnut shape & size
- Polynices, small
- " dog-eared
- Conus - alert, burrow like Oliv.
- Alvella pedroana
- Thais sp (plouderi?)
- Panopus
- Dryas
- various small gastropods
- Pelagicopods - empty shells, various
- Starfish, on outer edge in sand.
- Comp. ascidia (with open)
- Algae, red, 2"

SC7


4/24/52

San Felipe - S. of harbor
on sand flats and yesterday
SC6 but further South &
a little further out.

Sea Anemone, red, 12-14" long,
shaped like *Amurella* slugger but
lower end of body. Spread of
flower 3" ±. Near outer edge
outer bar.

Sea Anemone, white-green,
long "petals" or arms, contrast
marked. 6-10" long, pencil
shape but craggy size. With
about 4 higher arms.

Arrow Keyhole *Sandpiper* by throat
on outer edge outer bar. 9 out
of 10 pointing out to sea. One missing
under it, turning it over. *Periphrax*?

Cirulus large Keyhole *Sandpiper*
with arrow large. Larger. 

Small green arrow dollar.

Large varnished Black murex in
Muyon. Reef.

Pagurus in various shells &
various sizes

507-2

Could

Orange claw, small.

White " , small

Tellus " , small

Borers in clay bed. If found
one have so fragile shells have
to handle by foot neck.

Alivella pedrona, plentiful.

Many starfish in sand on
outer bar - the fragile ones

Many casts of porcupine
and dollar (walnut size & shape).

Worm tubes, *Colasurus*, small

508

1/23/52

Sau Felipe - S of bay, same
as 507 but further S!

Also along beach at H.I. mark

Polinices collos

Red 14" Sea Anemone

White 8" " " - Spirals like clam
Flowers like opening.

dk brown antennae on 1" diam worm.

Conc. lined clams, on sand banks
mostly toward shore. 2d bay exp.

Sm. sea anemone 1/2" long, on shells.

Large Black Myxozoa on oyster bar
on rd. bank fr. shore. Also some
on sand flats, partially buried

Polinices, sm.

Olivella, large *O. pedronum*.

Poropus.

* Sand dollars print *agassizii* - as
in lagoons draining, print very strong

A variety shells fr. last night
H.I. mark.

509

1/24

Very windy - northerly & E.

Sau Felipe - S. nearly to
Cliffs (1/2 mi more) & beyond
collecting 508

Dry shells of note:

Print myxozoa - good

Angular shells - fair only
Alphabetic clams (black & white clams)

Light cones.

Cone, brown (Olive shell?)

x Arca - to get

Wing shell (Pedalium?)

Spirals? or *argularia*? - looked shell.

Jingles

Live:

Polinices

Olivella pedronum

Poropus? - small.

Worm crabs

Wedgies

First part

2 glass floats - 1 met.

SC 10

7/25/52

San Felipe.

Oyster Bar S. of San Felipe,
a sandstone? strata protruding
from sand beach. At mark
4' higher, 50-60' up beach - Sand
dunes beyond stone mark. At
low tide 0.0', bar above water but
with tide pools in & below. Wow.

From upper edge -

Bryozoa predominant, with
Acanthium?

As go seaward & gradually down,
Cerithium (speckled black & white)
Small sponges

Then what almost constant (with),
Astraea predom.

Worm in black casts.

Thin, with Acanthium & Cerithium
Bryozoa some.

Cerithium (Cup & saucer)

Pogonurus (at all levels)

Crabs (under boulders, all rocks)

Algae near sea -

Filosa (massive)

Sponges like deep indented

Filament - brown

Dark moss

Cont 1

SC 10-2

Algae - coral -
Brown, short tufts.

Eucnemataxons, deep -
Orange.

Bryozoa, red brown.

Coups, acid - cream, ^{stagnant} _{water}
" " ? Orange - along wet

From mid-bar out, in crevices
& semi sheltered cavities, with
" many sponges, often highly
covered with sponges, etc. clean
[scribble] - to 4' long. Many.

Crabs - to get

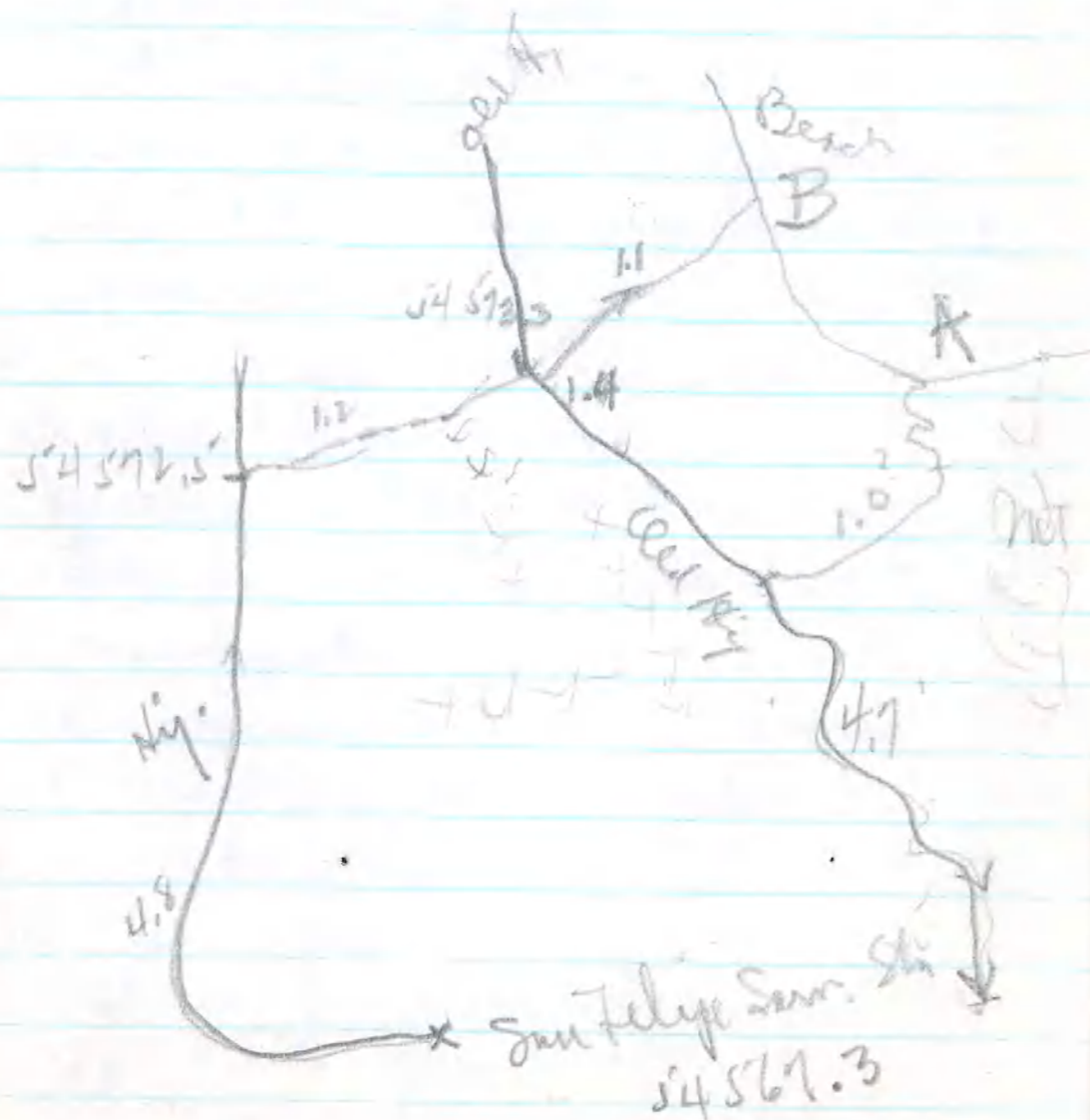
SC 11

2/26/52

N. of San Felipe, N. of larger
Coast mt. On sandy beaches
at H.I. mark. Only dead shells

Muddy water in heavy sand
& at near H.I. indicates considerable
sand flat N. of shore. Also, oyster
shells &c, indicate some rocky
bars.

at A + B



SC 12

2/27/52

N. of San Felipe, N. of SC 11
Sandy beaches below alluvial
cliff, reached by arroyos.
Below 50'-100' steep sand beach
for H.I. mark down to g-r - then
100 yds to 150 yds boulder flats with
silt & clay in spots - some lagoons
then out for 1/4 - 1/2 mile sand
flats, much silt. 3 belts "stone, 8'
Boulders of 2 & 3' Flats of 3 & 4'

Boulders yield - Crabs.

Oysters 33. *Crepidula forficulifera*

Barnacles 2 & 3

Thais floridana? & eggs.

Murex - black, large - 33

Rock oysters

Mussel - (live) 3 & 3. Between boulders
Petricola? - 2Clam shells indicate several
kinds to be had. Also *Cardium*.
Also *Jacksonia* & *Ensis*.For directions to reach, see
journal this date.

Wedgies on sand bar.

SC13

2/28/52

a. N. of Sand Flats at Beach B
On sand bars (little silt in
some lagoons) 3 to 7 bars out
to today's low tide - probably 1000 yds out!
at a minimum 1.0 tide. 1000 yds out!

b. Also in 293 where Oyster
& limonch. hold fast on bottom.

a. Cones - in shallow lagoons
in 293 & 301 lagoons from sea. * See
Thais (Florida?) with
Sponge, orange, on above.

Sm. fine oval-like shells
Sea cucumbers, sm., light brown.
Medibronch, in wet sand near
sea, small, creamy white

Arrow Keyhole sand dollar.

Green " " "

Wedgite

Worms (branlike balls)
" with yellow growth

b. Black murex.

Thais florida? med size
Oysters small, too close together.

Reddish sea anemone, yellow stalks

Green " " " "

Crabs

Bugurus

SC13 cont

a. contd.

Polinaria

Alveolar

Worms commenced with Conus.

Crabs

Bugurus

Big Acol (Jussetella)

Sea Whip (Pencatella?) in mid to
outer lagoons.

~~At.~~ Hydroids - 2

Great Knife, shells only

* Crab with shell valve for back.

Polinaria collar - 1 with ~~...~~



130⁵

Cornus is somewhat pedicel - don't know of more much seems to prefer a bit of silt on bank - it will.

Polinice is common, & travels. March distinct furrows.

Olivella ^{det.} shows in 2 places, but shallow.

Thais (with young) - keep poorly, young visible - but not found.

Thin sand from Levins shell, like Olivella: Cerithium

Neck branch - similar to Olivella but shorter.

Keyhole Drus Volcania travel a few to inches - monitors and effect of gas pressure

2-29-52

SC 14

Sou Phillips - n. on by 5 7.6 miles
Sta C - tunnel left 50 ft
Old day, the down always to
the side, clips along in the
the alluvial cliffs.

Boulder field with red clay
& is made, by water & run to
not imposed greatly. the last
number of national observed.

Took

Algae - along the side of the cliff

Some are green small leaves

A few Black seaweed

A few explosive by bursting of
water very commonly found

Thais - large
Polinice

No Cornus.

3-1-52 SC 15

Sandstone, fine, quartz, quartzite.
Evenly bedded. Small A.
Sandstone, fine, quartz, quartzite.
Evenly bedded, somewhat fine grained.
30' or 40' thick, each part like.
Rock of quartz, chlorite, greenish
heavy, slightly, sandstone.

Phosphate in soft sandstone

Flat horizon of 3' thickness
Previous bed is fossiliferous as are

"Pismo" sandstone bed
Various empty shells, esp. *Cardium*
Chamaea, *Chamaea*, empty *Chamaea*
Among are, *Chamaea* where rock
is soft & light in color
All manner of fossils on reef
top of reef
Crab - with SC 14
Cone shell - 1 live
Plantation shell - 1 live

3-2-52 SC 16

Sandstone - n. to Sta 10
Sand - no rocks - *Chamaea* has
been washed away, or large - silt
only in layers 4' thick, 0.10 - 1.0
ft. sandstone, small fossils, small or over
1 mile wide.

2 Jelly fish
Small mud ball, 2 siphons
Barnacles
Hydras - 1 foot long, sandstone
Jelly fish - *Euspira*
Two red clams.
Worms
Many shells.

White plant crust in sandstone
Thin, large but dead *Chamaea*

3/3/57 SCM

S. of San Felipe River 18 mi
 as per sketch in the very old book
 Sunday beaches, no shells
 brown mud, few cobbles.

- | | | |
|-----------------|--|---------------------|
| | Cornice | Pink mud |
| | Clino | Bl. " " |
| | Cone | Tiny shell-oid |
| | Pen shell - rough | |
| | Thrombolites | |
| | Pecten - 1 deep, 1 flat (top) 1/2 inch | |
| | Small clam - about 1/2 to 3/4" | |
| Large
shells | Large blue clam | |
| | Large blue | |
| | Small | |
| | Polysiphonia = Ensis | |
| | Polysiphonia | |
| | Polysiphonia - long | |
| | " - striped | |
| | Cardium - small | |
| | " - large | |
| | Winged shells - or - attached | |
| | combs | |
| Red | Wedge | Crab, Scum |
| | Ribbed clam 1" | " " small, low, low |
| | Rippled 2" flat bottom (1/2 inch) | |
| | Wedge - 2 flat, 1 curved | |
| | * many cast up Litho - note above | |

San Felipe



3/4/52

5C 15

San Felipe - S. to Punta Diego
 on S. side by rd. major fault
 S. of Little, near 6.6 miles from Punta
 Punta Diego is really 3 (maybe 4)
 points. First pt S. is north, sand,
 one 3'-4' strata of rocks on sand -
 rocks not stratified as expected, but
 seem to be low in many shells from
 full of shell fossils, mostly Clams.
 2nd point is of soft, similar to the
 rock strata. Some with 3', but
 much thicker. rocks about 10' (10-15)
 ft above H.T. where in other country

Punta Mts - all debris granite
 seen on large mass, cut by erosion
 into ridges in all directions. Not long
 ridge as appears to S.E. valley.
 Heavy shrubbery about summit
 of base old world with other more
 primitive when seen from the dunes
 At west base of mts. in small
 valley, perhaps, however, stand large
 species of fern seen anywhere
 Shrubbery on dunes, with long-stemmed
 Euc. Pinnacled & smaller, glass-like, long-stemmed
 Bush sand except where rocks
 of some small trees on dunes

5C 15-2

1000

Found -

- Punct. minus shell
- Blanca " above
- Veritas alive in splash zone
- Petricola? in crevices, small
- Euscopi? shells.
- Prototrocha markings. Shells
- Alive, shells.
- Many shells (some attached)

- Small starfish, sand dunes
- Hydrates
- Tellus - look & small, found in dunes
- All larger at H.T. & dunes.
- Gorgonids
- Gordalinea Bryozoa
- Encrustation

over

SC 18



3/5/52 SC 19

N. of San Felipe, at ^E base
 of Big Mt. Sta. A, S. end to
 granite point. A series of 3 or more
 low terraces, narrow (relatively)
 and low area. Sandy beaches.
 Abundant with boulders.
 Collected in burrows - oyster area.

- Black Murex - multitudes
- Petricola?
- Red Clams, Pectinidae
- Purpura
- Crepidula
- Flat worms
- Chelone
- Thais
- Crepidula
- Fish

Algae -

3/6/54 SC 20

South of Leighs Pt 4-1000
1st fork to right, well sign,
3. 1/2 mile. On main road then
to flat rocky ridge - out
over dunes 0.5 mile (eastward)

Sand point with bars
extending fringe-wise from it,
longer generally S.S. to about
planning a bar for D. Long shells
Sand and very many shells,
Algae beach steeper than elsewhere
in area.

Pet. Tellinid

Cornus - small bottles of

Olive -

Alusilla petronas?

Cardium varium

Fringy yellow clam (Shell no)

Coel. chips - shell no

Old Pet varium

Sm. varium " 2nd"

Eggs shell clam

Encrustation

Black mud

Black mud

SC 20 - 1

Polisiers - large shells

" small shells

" small shells

⊙ Kelp shell small ones, 2'

Wedge

Frog shell - small ones

Wedge

Mussel

Shells of pholade - ~~small~~

Coast of small spines



3/1/20 SC 21

Small blue - S. of Bay Vista, same
as SC 20. It is not a distinct
character. original sandstone.

Specimens
Found in SC 22, plus

Callinotoma sp.
"Architecton" - like the 2 species

Cardium sp. Alive.

Eurovolutaria like atropis

Eusisobella - good examples.

Shell like C. products

" " Baccarionella-like

SC 22 3/8/20

Small blue - S. of Bay Vista
same as SC 21 but 517 fossils
~~with some small shells~~
A few small in some corals, some
H.D. mark, Splend. fossil
zones 3 to 4 on base in layer
above

Cardium - small

"Pisces" small 2"

Alone

Alone

Polinice

Natica (small)

See also some ^{white, 12} ^{longer} ^{small}
Almonia-like, long, ^{white} ^{longer} ^{small}

Thin shell like Baccarionella

Wanted alone, 1"

Shell - large

Pecten

Yellow alone

Cardium, large

See pen

Almonia-like (small)

Specimens

Card. of fragments and shells (small)

Print alone

3/10/50

SC 27

San Felipe, beach along rd
road, about 1/2 mile
east by beach, mostly
for 1/2 mile, road cut
clay, alluvial clay, gneiss.

Many shells blue by clay,
some fossiliferous, some
specimens for study.

Some by shells
Wormholes (or other?)

Present some bryozoans
and sponges
Some pebbles
Some bryozoans
Some Polysiphonia

	San Felipe	55 032.9	0
	cut to beach by rd 5'	55 032.2	9.7
	cut by beach by rd (2)	55 031.5	0.2
	Juan E to beach by rd	55 034.7	0.1
Beh E	" " " "	55 035.0	1.7
	(6" + beach, across)	55 030.0	3.0
	Beach, across	55 031.4	1.4

Interim

To Oakland

&

back

4-1-52 SC 25

Sau Felipe - S. of Pta Diego
Sand flats at -0.21 tide.
found 24 3+ ~~small fish~~

Ghost Shrimps shells disturbed
in gray sand near base of steep
sand beach, 2-3.
Two Small Crabs
Hermit crab - Pink hermit shell
Oliva
Common fine clam species
Hells. Auger shells.
Bubble (Buller's)
Crown
Blue crab
Small clams

Port - San. sand beach, Pta. Diego
Pol. locket
Oliva
Wedgie
St. John

SC 26

4-2-52

Sau Felipe - north of mt.
Sta. A. Sand flats
small granite boulders, 2-2

Blue Crabs in pools
Ascid. Em. crabs for below rocks
Pinto clams Prototanus
Tunicates
Octopus
Barnacles
"Jelly Fish"
Spongy or Geolipid (Thin?)
Ascidia
Aug. & small fungus
Sm. gastrop. - (Hills?)
Sea Anemone for bottom of beach
Yellow polyp - ?

Algae - 2'

4-3-53

SC 27

Same Felipe - N. to Sta D
at road to cliff top. Sand bars
with much clay & silt

Tide - 0.3. Surf, water muddy

Polinices sp. banded

Balanus sp.

Mytilus sp.

Thais "ferussakii"

Cyprina limosa

Black mussel - large, heavily

banded

Small brown owl

With Nichols, H. Riverside

SC 28

4-4-52

Same Felipe - So. of Puerto Higuera
at Sand point (junction S.)

On sand bars & inter. lagoon

Pagurus

Scud animals on Bl. mussel shell

Hydrobia

Polinices - mucky

" - banded

" - plain

"Pecten" sp. brown

Alivella

Alivella

Garypod - red

" - white

Black mussel

Shells as above plus

Pecten

SC 29 4-5-52

San Felipe - S. of Punta Ligas at
end road just below Sta. ruins.

Steep sandy beach - narrow beach
N 33-4 - sand point.

Five - Wing shell - Boulder field
Clay fish Speckled bottomies
Small "

Egg, yellow, in mottled coats.
Crab Coc. Sea Urchins - 25

Gorgonids - white
Black crabs, sea, heavy claws - Brackets,
Bogues

Thais "fendia"
Black murex - egg, sm. white
to boulder field

Sea clams - white, blue, pink & black

Polinices - {beach / plain
Nudibranchs (or baby sea slugs?)
Alia & Alucella

Shells - Thais - large murex
Squidles, sm., with remains
Pinnas - large rough, much
stuck in it.

Scot's Bonnet - shell, pair mating - found
by Brown.

Algae - purple, blue, green.

SC 30 4-6-52

San Felipe - same as SC 29
but out on jet bar (from shore)
and in 1st lagoon.

Practically no silt. A long
lagoon, shallow, much of bottom
fairly free of ripples & marks.
A little surface silt in spots.

Coast shells - where some silt, near
Black murex - not common, small &
white, among boulders.

Wing shell - Thais. " "

Pinnas - shell " "

Clams - many - along boulder
lagoon, most near base of shore, in sand.

Polinices - large, called "lugs".

" - white
" - grey mottled
" - striped

Many Detritus - not taken

Crab, potted claws - 4 taken.

Coast shells shell - much like Polinices

Pinnas " brown clams.

Detritus - much taken

Clay fish " "

Other sm. potted fish " "

Red green shrimp " "

Red gorgonid " "

Color plates of live shells
5m. Keyhole 5m. Keyhole
(Brown large clams shells)

Alucella -
Nereis
(Shells taken by Brown)

Worms - "disturbed" 3" diam.
Fossil clams

Algae -
Bryozoa stems
20 cm long

4-9-52

SC 31

S of San Felipe along sand
dunes to oyster bars. Collected
outside sand.

Arrow Keyhole Scaevollas
Olive

Saw big clam (neck) but
unable dig it up with pipe.

Algae

4-10-52

SC 32

San Felipe - N of water 84 A
in early am. at low tide -
To S of arrows, outer edge of
rocky bars (boulders)

Conus - when sand overlies by silt
Olive

Olivella -

Worm tubes

Crabs - sm. - round, marked.

Polinices - large plain, calloused.

Spindle

Scutella (auger)

Bl. mussel

Algae - on boulders.

SC 33 4-11-52

Pointe Termin - S. of San Felipe
27 mi., past Sulphur mine
to Lagoons.

Crushed at old beach (coral)
1 Watched - various leaves -
working to leaves

1/2 of Camp
Lagoons, low tide. Sand
flats, sand lagoons with
silt - also some boulders
shells, oysters & barnacles

Worked out 1/2 mi. to
gulf edge. Found many things
in porous colonies.

- Oyster bars (on boulders)
- Crabs (under boulders with oysters)
- Bl. murex - with "
- Pink murex, eating cones " "
- Septanemone - on gashipod
- 21 Ray banded Starfish

4/11/52 SC 33 -

Sand flats - mostly well out

Large Conus (few)

Conus regularis (spotted)

Polinices - banded

" color

" - Callous (few)

Olivine - most plentiful

Olivella

Wedgie

Sand flats, closer in.

Sm. Turritella

Olivella picturata

Sea Anemone - long, creamy

Polinices - callous

Wedgie

Sand with silt

Large Conus

Plain polinices

4/12/52 SC 35

Sand Felipe - S. part of ...
Mussel, present at ^{day before} ...
SC 33 ...
Sand at ... - Small Bay.

- Bar & lagoons west of ...
- Comes regularis (spiral)
- Alina
- Alinella (small)
- Brown lined clam, 2.5" dia
- Pentacalis
- Long legged spider crabs, ...
- Arrow height ...
- Bay @
- Small @
- Alga (like ... string)
- Polinices, banded
- Alatigis

SC 36

Bar & lagoons clear with
patches of low rocks, covered
with barnacles & oysters

- Black mussel
- Large striped conch (pink)
- Polinices - long, ...
- Alina
- Ostracods - ...
- Barnacles - ...
- Cerithium
- Hydrobia
- Hermit's crab in ...

Splash zone -
Small Fiddler crabs

4-15-52

SC 36

San Felipe, S. of Rio Hondo
lower part of "wood" (Coral)
Small bivalves, cobbles in
spots. Inner lagoon & foot
of steep beach both prolific.

Olive

Polinices - yellow

" - banded

" - grey

Pl. murus

Uvula

Gorgonit

Pinna shell

Brown clam

Small shells - like on cobbles

Keyhole limpet

Crepidula murus?

Chitons

Anguilla shell

Bubble shells - like one, not identified

Crab

Clayfish

Other snails - for under rocks

Groceries

Shrimp

4-16-52

SC 37

San Felipe - N. of local peaks,
worked bars & rocks N. from
Arroyo. Sta A

Black murus

Polinices - yellow

" - grey

Acc. by Fred & Bes. Brown
of Kansas City, Mo., and H. Berlin
of Ames, also Magooch.

~~4-16-52~~
4-17-52

SC-39

Snail Telpi, S by boat
Puncta designa worked in shallow
open cover. Then, in little effort
many green brack shells, at
a distance, beyond shell.

Crabs

Black murex

Larva

Larva

Chiton (small)

Limpet

Cup & Saucer

Olive shell

Flat heavy clam shell

Turritella

Limpet

Hooked limpet

Red box

SC-39

4-23-52

Snail Telpi - Rocks N. of
light, 1/2 p. Murex -

Puncta shell, small

Limpet, blue center

Cup & Saucer

Bl. Murex

" " with Hermit.

Crepidula nuxia

4-24-52
4-23-52

SC 40

San Felipe, N. of Pt. U. peak

Sand & gravel upper steep beach
to sloping beds of boulders & cobbles,
largely granite, with gravel,
& in lagoon, some silt.

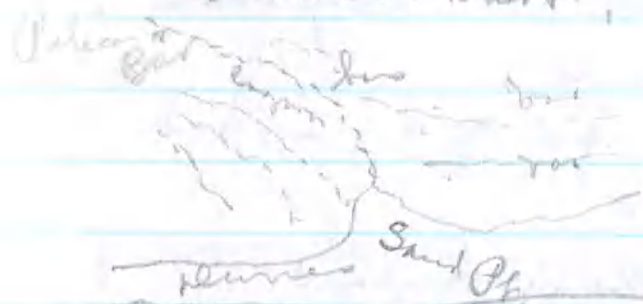
Found

- Barnacles (below) not taken
- Oysters - few
- Bl. murex
- Comes - yellow - with silt
- Tringids
- Mud crabs
- Polinices - collus.
- Alus - rock, patterned
- Long clam - 1 seen?
- Red barnacles on beach (68)

SC 41

4-25-52

San Felipe, S. of Pt. U. peak
at south collecting ground -
a sand point, with sand bar
running out in slight curve, E &
N, & intervening lagoons, shallow.
Little silt. End of sand bar where
fleshy murex, about 20 mi. off shore
Inner shore, 75', 20° slope.



- Sponge
- Forgonid - white
- Sea mouse - in sand like olive.

- Comes -
- Olive
- Olivella
- Polinices - grey
- " - collus
- " - banded - small
- Wedgies - white
- Crabs
- Squirts
- Helmer (shell)
- Jackknif clam
- Prick murex
- Bl. "
- Sim. Turritella
- Large yellow clam (in SC 42 jar)

4-26-52 SC 42

San Felipe - (S. to Salfun name
4 E to coast) S. of Camp Arroyo 4-5 mi
San bars with tongues of
boulders, lava, granite, sandstone,
projecting seaward to low tide & beyond
Lagunas with mud - salt - sand
washing over many smaller beds.

2 sp. Sea Urchins
1 red sponge fr 3", in bed.
1 " bygonia
1 purple coralline hybrid
Trinia shell
Sponges - about
Ones regularis (sponges)
Olive
Olivella
Callousish polynesian
Sponges - dark
Polynesian - grey
" - white
Wedgies
Many clam shells - flowering.
Strombus purpur
" abatus shell
Small turritella
Winged shells.

SC 42-2

Large "Hans emery" type spec.
Perna - also blue shells!
Crabs - 3
" - fiddler? 1
Bubble shells - mt.
Tubes, calcareous, on rock
Star fish like Henricia (271)

Describe back home of Poyama

Whole carcass on shore.

10' shark on shore -

Algae? Small, in bottom of rocks
Spider crab - small



4-27-52

SC 43

Santa Felipe - Sulphur mine
& Arraigo on Genl Rodriguez
Ranch.

Delicent N. as far as S. bay
at Lagoon - about 1/2 miles E.
On 1st bar out, Banco 11 to
Coast, then become degraded, rising
N.E. at Lagoon.

Nearly pure sand, & herb. ^{no} _{no}

In 1st lagoon (1) shore, shallow
millions of  &  sand dollars,
Size 10⁺ quad to 25⁺.

Also

Olive

Olivella

Thrombia pegibis - kicking out
up out of hard sand near mud bar.

Wedgies

Brown clam

Mottled chunky Crabs, Squid

Jurvello, long, alid. In hard sand.

Small.

Jack knife clam - On surface
near lagoon, 1/4" deep dig in sand
Bl. Murex - abundant
Algae & 1st Nymphaeids

SC 43-2

Algae -

Rope Cony. ascidea (Bryozoa?)
Ropy streamer, like snake, with nodes.
Ways around other objects, or loose

Nymphaeids,
Spongy "Callinectes"

Pecten shells.

Sand starfish abundant, not taken

White conical limpets - lifting shells of
old sand dollars to which attached, ft. sand.
Small Conus regularis. In hard
sand, apex down, could just out.

Sailor's Ear - 1/2 inch only.

Wing shell

5c { Spider Murex } Shell only
4x { Fig shell } (for Corolla)
Helmet

4-29-5v SC44

San Felipe, N. of Los Angeles

Buller's field, 9, 10, 11, 12, 13

San Felipe, San Bernardino

Gravel (dunes)

Barnacles

Algae

Clay

Clay & sand

Clay

Clay, sand & gravel

Camp & Sauer dunes

Amphibia

Butterfly shell

Trigona

See SC #3, loc. 3 shells

Spec
Nos

Low

AN 7

Acad
Sewer

Pms

- 1. *Strobil. alatus* 34 ✓
- 2. " *pygmaei* 43 ✓
- 3. *Polinicea* - plain 3-41-35-33-21-4
- 4. " - banded 35 ✓
- 5. " milky ✓
- 6. " grey bands ✓
- 7. Cone, large ✓
- 8. " , sm, speckled ✓
- 9. *Turritella* ✓
- 10. Shell, large, knobby ✓
- 11. " , sm, long neck ✓
- 12. " , md, " , narrow ✓
- 13. Bubble shell, brown ✓
- 14. " " , olive ✓
- 15. *Spirula* ✓
- 16. *Ampelisca versicolor* ✓
- 17. " , bean, lips not up ✓
- 18. *Acornuthin* ✓
- 19. *Tegula*, large, green ✓ 2
- 20. " , dark, spots under ✓
- 21. *Nassa pumila* ✓
- 22. *Nassa* like ✓
- 23. *Verita* - *Portia* ✓ 2
- 24. *Alivella* ✓
- 25. *Cornu* ✓

Spec No	AN 7	Acad Sewer	Pms
1	0	0	
2	✓	0	42
3	✓	✓	
4	✓	✓	
5	✓	✓	
6	✓	✓	
7	✓	✓	
8	✓	✓	
9	✓	✓	
10	✓	✓	
11	✓	0	
12	0	0	
13	✓	0	
14	✓	✓	
15	✓	✓	
16	0	✓	
17	0	✓	
18	✓	✓	✓
19	✓	✓	7
20	✓	✓	
21	✓	✓	
22	✓	✓	
23	✓	✓	✓
24	✓	✓	
25	0	0	

		Done
26	Pink murex	✓
27	Thin black gast.	✓
28	Keyhole limpet	✓
29	Acmaea, blue inside	✓
30	Crepidula - flat, white, sp.	✓
31	C. adunca	✓
32	Cup & saucer	✓
33	Small, sturdy worn gast. (7 or 8 mm)	✓
34	Lejla	✓
35	W edgias	✓
36	Blastum	✓
37	Yellowish clam, like - bodjegensis	✓
38	Rock anemone	✓
39	Amphedromus	✓
40	Brown	✓
41	Pecten	✓
42	Larva, orange interior	✓
43	Cardium - (2 species?)	✓
44	White clam, med.	✓
45	Clam striped, but not (2013 sp?)	✓
46	Tellina bodjegensis (white)	✓
47	Clam foot knife, middle legs, hind.	✓
48	" but nose.	✓
49	" plain gopher	✓
50	" large, hooded gopher?	✓

Alt 7	Recd. Se.	P.M.S.
✓	✓	
✓	✓	
✓	✓	
✓	✓	2
✓	✓	
✓	✓	
0	✓	
✓	✓	
✓	✓	
0	0	
✓	✓	
0	0	
0	0	
0	0	
✓	sc17	
✓	0	
✓		
✓	sc17	
0	0	
0	0	
0	✓	
✓	✓	

		Loc
51	Murex	✓
52	Wing shell	✓
53	Area?	✓
54	Paphia stans? Perled	✓
55	Tridacna? Br. clam, thick	✓
56	Jack knife	✓
57	Ear shell	✓
58	Helmet	✓
59	Chione	✓
60	Spider murex (arab.)	✓
61	Fig shell	✓
62	Black murex	✓
63	Olive shell	✓
64	Trematium (Biggley)	✓
65	Dorsina (Biggley, flat)	✓
66	Sea Fan	✓
67	Pholada	✓
68	Red barnacle, large	40
69	Wh. " long, heavy thin Blom	40
70	" " " " "	20
71	" " sand. Blom?	11
72	Quinque Chitons. White feet	40
73	Black " "	40
74	Small, broad " "	40
75	Blacked " Sec 70	0

AK 7	Acad Sec.	Plus
✓	scr ✓	
✓	✓	29
✓	✓	
0	✓	
✓	47 ✓	
✓	17 ✓	
30	30	
0	53	
0	0	
0	15	
0	15	
✓	0	
✓	0	
0	1	42
0	1	✓
30	0	0
10	0	0
40	0	40
40	41	41
0	26	26
0	0	0
0	40	40-18
0	40	0
0	0	0
0	0	0

Miscellaneous

		Loc	Qty	Cost	Price
201	Sea Urchin	SC 13	SC 13	0	0
1	Antipater	2-26	2	0	2
2	Bryozoans?	20-14		16	19
3	Bryozoans, large, typical form	10	10	10	0
4	Egg cases, Polinaria	8-20	0	0	13
5	Sea Squirts	14	14	0	14
6	Worm tubes, common	4-03	4	0	4
7	Sponges, small	3	3	3	3
8	Sea urchins, small	70	0	0	0
210	Bl. worm	22	22	0	0
1	worm	496	0	0	0
2	Sea urchins - small	13	13	0	13
3	Sea urchins	2	2	0	0
4	" " " "	18	18	0	0
5	Hydras, small, long, slender?	23	23	0	0
6	" " " " - large form	6		0	0
7	" " " " - typical form	10	10	10	0
8	Algae - light clumps, 2" tall	18	0	0	UC 11
9	" " " " " "	18	0	0	UC 11
220	Hydras or algae? 2 1/2"	18	0	0	0
1	" "	43	43	0	0
2	" " " "	17	0	0	0
3	" " " "	13	13	0	13
4	" " " "	18	18	0	13
420	Cucumaria 2"	2	0	0	0

Misc.

	Page	Ref	Page
226	Ceramium, E ^o	3	3
"	" " 2"	13	13
1	Flat worm in Zoo	15	15
2	" " " from <u>Pelle</u>	15	15
230	" " " "	19	19
1	Worm & tube holes	42	42
2	Pitted ascidians?	3	3
3	Eminent, <u>Agardh</u> , <u>Agardh</u> (<u>see also</u>)	10	10
4	Mouth of stringy eggs	29	29
5	Rope <u>Corymboides</u>	43	43
6	Long spined Sea Urchin	42	42
7	Thin " " "	30	30
8	Barnacles	34	34
9	Sponges &	0	0
141	Polysiphonia?	41	41
1	Body encrusting - <u>Verm</u>	20	20
2	" " " <u>tan</u>	27	27
3	Egg case	32	32
5	Apophysis (22 <u>min</u>)	41	41
6	Sponges?	42	42
6	Jelly, <u>mid</u> - <u>col</u> - 1.2" (fill - 26)	10	16
7	" " - <u>spec</u> - 2" x 1"	29	29
8	" " " - 5"	26	26
9	Ammonites - 1"	26	26
150	Jelly fish 7 1/2" <u>len</u>	26	26

These

	Count	Count	Count
25'1 Porcupine	6-7-41	0	0-22
2 Worm casts, (C)	9-19-41	1	13-8
3 Corp. bodies on ground	32-76	13	31-13-14
4 20 Ring Star in hole	16-44	42	42
5 Corp. body - 10-20-41	10	10	10
6 Corp. Squares	15	23	17
7 Red Gorgonian	26	24	20
8 Branching "	36	34	34
9 Keyhole Sand (C)	25	22	30
260 Fish	0	19	0
1 "	0	30	0
2 "	0	29	0
3 Stichopus?	0	45	3
4 Purple Star, 10-16, 11-12	3-3	3	0
5 " " " " "	30	0	30
6 " " " " "	0	0	2
7 " " " " "	2	140	0
8 Star fish	2	2	19
9 Echinoid, on ground	23-20	0	11
290 " " " " "	44	40	0
1 Star fish, red, 10-12-41	42	42	42
2 Blue Worms	0	0	13
3 Large round Keyhole Sand dollar	43	0	43
4 " Arrow " " "	43	43	43
5 Ring fish	36	36	

Algae

276	Algae - small, blue-green	76a
7	" - Scummy, fine string	76 b
8	" - stringy	76 c
9	" - knobby - fleshy	76 d
280	" - brown, slimy, with white	7
1	" - filamentous, dark brown?	8
2	" - filamentous, yellowish	9
3	2000 bushy	34a
4	" - filamentous	34b
5	" - filamentous	34c
6	Fucoid, brown, dark red, on rocks	3
7	Algae, reddish, tuft. 1 1/2"	6
8	" " " " 2"	7
9	" , finger like, green - 4 parts	11

290
1
2
3
4
5
6
7
8
9

5/11
200
0925

76a	
76 b	
76 c	
76 d	
7	
8	
9	
34a	34a
34b	b
34c	c
3	
6	
7	
11	

Music

300 Shavings
1 4" fine sawdust
2 Hydrocod

RAM	THS	ANT
80 36	36	0
36	36	0
7	0	7

En. Spec.

400	Drill. Cloudneck	6 or 7 teeth	from Acad.
1	" " "	4 or 5	" " "
2	" open "	4 or 5	" " "
3	" cloud "	small open, flat	small from Acad.
Occasionally	" banded	Palmyra	Agul, 49
4	" 1/2 "	sm. white	" " "
6	Pictorina	plain, 3/8"	" "
7	Large Erato?		" "
8	Terebin		from Acad.
9	Pictorina	(fucina?)	" "
410	Chiton	(S. spiro)	from Acad.
1	"	slim smooth 1"	" "
2	"	no hair, staled, green	" "
3	Gastropod	green, 3/4", ridged	" "
4			
5			

Eusemata

J-2-52
BC25

N of Eusemata 2.1 mi
just 1/2 mi N of La Playa
where collected before 1951 + c.
Rocky coast, boulders & bed rock
Various kinds of stone, esp. lava.

Conspicuous chitons, in
various ages & sizes colonies on smooth
ground rocks, 2 - 3 PMS LOM

2 Melopelia + 3 larger LOM

Other chitons - Conspicuous LOM

Limpet - flat, blue inside LOM - Acad.

" - ribbed, small LOM - Acad.

" - volcano key hole LOM

" - oval LOM

LOM AH7 PMS Bubble shells where sand & silt
around boulders & cobbles, of 1-2,
with algae. Around edge, on top of cobbles.

Heliotis - crack - small

H - S. green -

Other sm. gastropods

Gastrea undosa - small Sep 2/3 LOM

1 Limpet - flat, border marked LOM

Tegula - spotted PMS

Acanthina (newspaper) Acad.

Chama? LOM

1/3/52 En 2 BC 26

Same sites as En 1 & further south. Includes heavily oarced (between rocks) area

Tide level + 0.5' Surf heavy.

- Morphia AH7 - Lom
- Chiton "Compans" En 1 } PMS
- Ochetochelone } PMS
- Bubble shells LOM-AH7 - PMS - Acad
- Pecten rostratus LOM
- Limpets - assorted. PMS
- Abalone - small, red & black LOM
- Acanthium? Set En 3 Acad.
- Tegula ligulata Lom
- Pteropyle mutalli? PMS

Algae on Owl limpet - Sila Lom
 Crab, large, hairy, on top PMS
 Algae, large, on same scab Lom

1/3/52 En 3 BC 27

Same sites as En 2 - 2 sites
 1. Eastern, N along coast as BC 27
 2. Further east, also below camp site

- Encrust. on Tegula Sila Lom
- Chamaea? Lom
- 2 brown shells - 1 1/2" 198
- Pl. attached - small shell Lom
- Pl. - tiny Lom
- Acanthium AH7 PMS - Lom
- Small limpet PMS Lom
- Star shell - PMS

- Large limpet
- Anomia Lom
- Astraea (red) Lom
- Pteropyle mutalli? PMS Acad. AH7 Lom
- Chiton 2 species PMS Lom
- Gemmae sabre var. foveol. PMS
- Erythra vitellina Lom
- Pteropyle mutalli? (Purpur) Lom
- Tegula PMS
- Tide - (See also En 10) Acad.
- noia nonsei Lom
- 3 Strud on "acanth"? Lom
- Gastropod, 1"-2", orange mat Acad. Lom

17th Oct '52 En 4 BC 28 1/5/52

Greenish
Rough ground, little sand, no
felt
Low tide only 0.7. Low surf

Astraea - 2 in, 1 in
Murex, some fine specimens
Shells
Basket shells
Bl. Abalone - small & some
Red " - small

Chiton - "Erycinus"
" - "other"

En 5 17/10/52 BC 29

Same as 5/5/52
and a little further out

Astraea
Murex } see spec. 400-409 incl.
Shells
Basket shells
Bl. Abalone
Red " - small
Chiton

Shell of Red Spotted Crab,
- like Chilton!

Owl Limpet
Ptery. sp. "Hammouth" Com
Aemona digitata Com
A. (purple inside, flat) Com
Aemona sp. small Com
Nereis Su En 3 Com

En 6030 5/8/52

Encuesta

On Punta Banda,
S. side, at inlet where
road descends to 2 cabins
once used by fishermen.

Rocky, some loose boulders
& sand in pockets.
Granitic.

Callitrix?

H. crach. - Com, about 1/8"

H. fulgens - tiny? Com

H. corrugata shells.

Acanthina pliculata. Com PMS

Thais exaristata? Com AHT

Acanthina { dequella Com
 { scabra Com

Qvul limpet

Murex

Chiton - conspicuous

ac.

Mutibrida

Porolithothamnos
Pond snails

Com

Com

Com

En 7 5/9/52
BC 31

Encuesta -

San Ysidro, N. along
cross to Bird Rock Point &
from ore dump. of 7, rocks

Fegale funebria? Com

Acanthina pliculata Com AHT

Qvul limpet

Chiton - sm, orange.

Mutibrida, yellow

Hydris, Com - AHT

Amalthea mytili Com

Many algae present - ex
posed to collect.

En 8 BC 32 5-11-52

Gomez Beach - "mouth" of
Santa Dominga - rocks & lagoon
outside sand dunes - seeps
into dunes.

Acrothrix lugubris LOM ATT PMS
1 *Tegula funebris* ^{SEM?} LOM
Striped *Littorina*? Acad LOM ATT PMS

En 9 BC 33 5-12-52

Penita Baja, Rosario.
Shells only

Bursa californica - LOM Acad
Taton festinus - Hinds LOM
Fossil *Taton* "
Piddock (Fossil?) "

Complete - nice specimens!

Acrothrix lugubris LOM - PMS
Thais senary? " Acad.
Acrothrix lugubris - dark " "
& small shells
Littorina - dark, sand " "

J-15-53 Em 10 BC 24 1/2

Encuesta, 71. of La Playa
 about 1/2 mi to sign KM 101,
 then to beach & 100 yds N. E
 loose boulders on flat area.
 Some conglomerate.

- Chitons { juvenile } "C. conspicuus" 7 May Com
- " - mottled brown. Com
- Tezala - Com
- Fluke gastropod 1" long " "
- Bl. Abalone 2" long. Com
- Red " 2" x 3" Com
- Heavy clawed crab Com
- Sm. "Murex" " Com
- Sm "Cancer" Com
- Prox. mar. sm. fish, large fish Com
- Shells of Equis? Com
- Egg case, spiral (det. shell) Com
- Ascutaria? Com
- Algae -

Lick - See also En 3 Com

2 small gastropods (see)
 Barnacles on Ascutaria Com
 PMS

Em 11 BC 35
 5-16-53

Same as Em 10, but
 got further north, 1 mi

- Halictes fulgens sp. green. Com
- H. crach. Com
- Many jewel crabs. Com
- Many spotted starfish
- Shells - asst. PMS
- Tezala. Com
- 413 Litter - green, red etc. Com
- Crabbing - Murex? Com
- Erato? Com
- Orange-brown crab Com
- Chama? Com
- Dichrochile conspicua Com
- Gemma sp Com
- Terebra? Com
- Algae, many
- Finger type, green & purple Com. PS
- Mussels - Com
- Gemma - small red

San Quentin Bay - Apr. 49. S Bch
 Kellottia kellotti & var. LOM
 Bursa californica LOM
 & hermit crab
 Chama peltocera (fide) LOM - PMS
 Barnacles LOM
 Lyonsia? LOM

Mud Flats S. of Pier 4-9-'49
 In mesh, in mud
 Cerithium californicum LOM - PMS - GFF

Shells La Playa April 49

- Helicis crassa LOM
- Nonisus nov. LOM
- Chama pellerita - trans LOM
- " " - fides LOM
- Drill - 5 teeth, closed neck (1 orange center) "
- " 3/4", open neck, fine lines around "
- " 1", closed - 4 teeth, heavy ridge "
- 404 " 1-2", " 4-5 teeth, banded brown with LOM - Acad
- 405 " 1/2", sm. white LOM - Acad
- Ptero. sp (murex) (worm) PMS
- Muscul. sp. Calif. - flattened in neck. LOM
- Littorine? banded PMS
- 406 " - plain, 3/8" Com - Acad.
- 407 Large Erato? " "
- 408 Terebra? " "
- Chiton LOM
- Worm spine, round, Littorine LOM
- Crep. adunca LOM
- " onyx LOM
- Laguna - "
- Acornthia lugubris "
- Volcanus keyhole limpet "

La Playa April 49

- Mozolia Com - Acad.
- Dactylochiton conspicuus Atf
- Long chiton, slim, checked with LOM
- 411 Smooth, light brown, 1" chiton Com Acad.
- 412 No line, etched, 1"-2" gray " "

Acornthia

Sau Yidrow
 South of " " Apr. '49

Shells only.

	<i>Acanthinucyprina</i> (Lugo)	LOM
	<i>Thais emarginata</i>	LOM
	" " - white	LOM
	<i>Tegula</i> - reddish, large	LOM
	<i>Haliotis</i> Crook	LOM
409	<i>Chiton</i> - plan, 1/2"	act. LOM
	" ? spotted bands 1 3/4"	PMS
	<i>Acmaea</i> - asalt	LOM

Sau Yidrow
 N. of port Apr 20 - 49

408	<i>Terebra</i> ?	LOM
	Small limpet shells	"
	<i>Acanthinucyprina</i>	"
	<i>Thais emarg.</i>	"
	<i>Haliotis</i> Crook. shells	"
	<i>H. fulgens</i> 1 "	"
410	<i>Chiton</i> - dim. Sea Pigeon.	LOM det.
	<i>Murex</i>	LOM
	<i>Megasthenus</i> ?	"
	<i>Acmaea</i> (banded shells)	"
	<i>Volcanus</i> keyhole limpet	"

San Quentin 'Pool'
Clam flats - sand & silt 4/8/49

Sandy, brown PMS from
Chamber heavy from

Lava at San Quentin 'Mud'
4-8-49

Limpets (File) Acorns 40M
Caespitula "
Cup & snail "

San Quentin 4-5-49
 Sandy beach near Laguna San Marcos

Nassarius fava?	Common
Spiral, 2"	" "
Pebbles	Common
Wh. clam, thin, 2"	Common
Tellin bodegaensis - 1 valv.	
Small dollar, small, no keystone	Common
Wedges	Common
Crepidula nevada	Common
Chicula bifurcata?	Common

Santa Dominga Beach - (opposite W-1)
 of Gomez Place 4-10-49
 on boulders.

Crepidula nevada	Common
C. sp.	"
C. onyx	"
Calliostoma?	"
Blue green Littorina	"
Banded " sp.	"
Erata?	"
Trig sp.	"
Thin white clam	"

also journals for
Jelly Fish -
Hut Wren -
Algae

